

DuxxBak Composite Decking

DuxxBak Dekk Mounting Clip Installation Guide

Issued 3/15/24

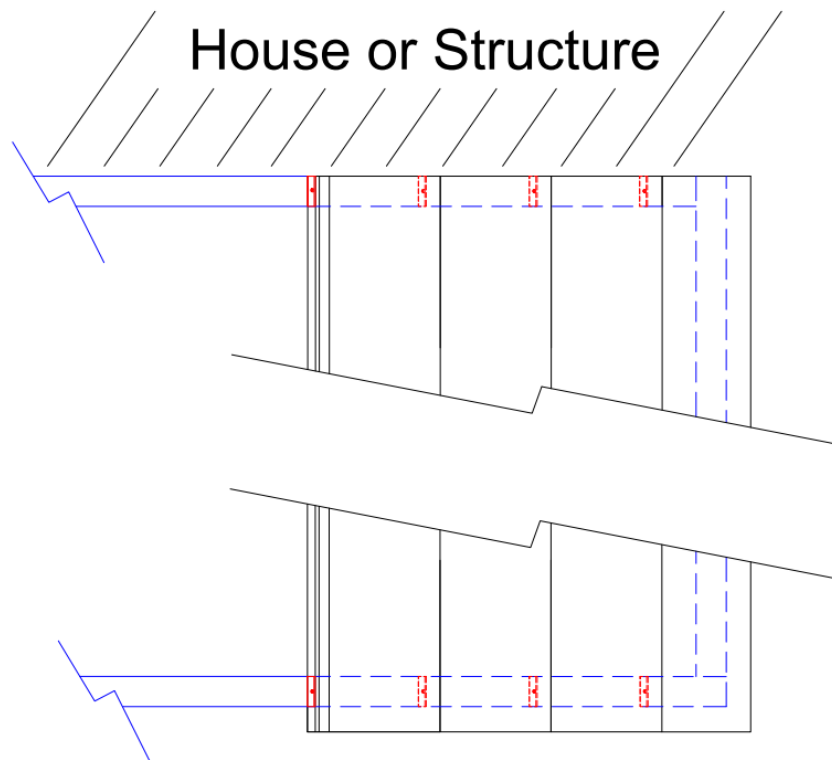
Composite decking offers numerous benefits compared to traditional wood decking, including its appealing appearance, extended lifespan, and low maintenance requirements. However, it's important to note that composite decking does undergo thermal expansion and contraction, a factor usually not encountered with wood decking. Over time, this thermal cycling can lead to fatigue in the composite material and elongation of the fastener holes, particularly with point load fasteners like trim head screws. At DuxxBak Composite Decking, we recognize that your deck is meant to endure for the long term, which is why we are dedicated to refining techniques to minimize or eradicate potential issues.

The DuxxBak Dekk Mounting Clips are engineered to address the following concerns:

1. Avoiding excessive tightening of screws, which could potentially compromise, crack or weaken the composite material,
2. Evenly dispersing the load of the fastener that secures the product in place. By functioning as a clamp, the mounting clip effectively secures the ends of the board, eliminating the point load of a single fastener.
3. Eliminates elongation of the mounting hole due to thermal expansion and contraction.

Installation of DuxxBak Dekk Mounting Clip

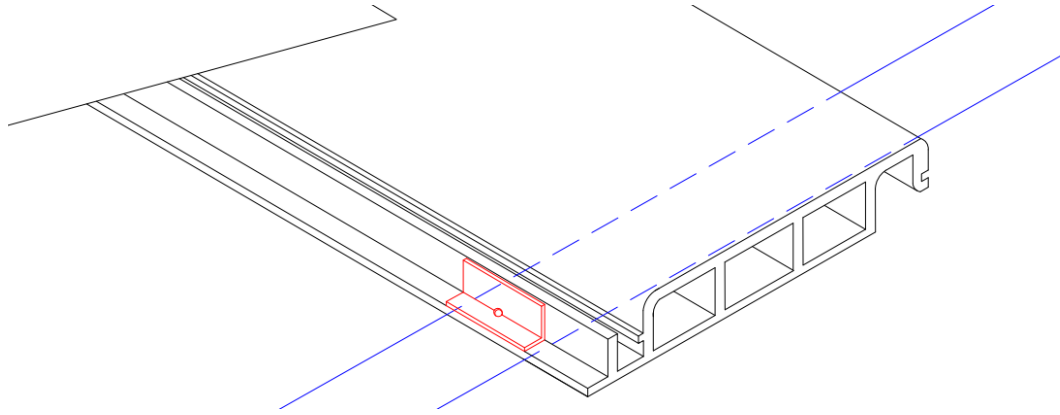
The DuxxBak Dekk Mounting Clip (highlighted in red on Diagram "A") is intended to be installed at both ends of every board.



Dia. A

Steps for Installation of DuxxBak Dekk Mounting Clip

1. Position the starter board in accordance with the DuxxBak Dekk Installation Guide, ensuring the board has the appropriate amount of overhang and the board is straight per the chalk line.
2. When a board's end meets a structure such as a house, garage, or wall, it's advisable to start fastening from the end nearest to the structure.



Dia. B

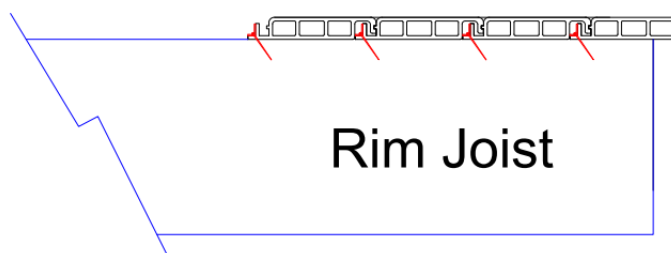
3. Once the board is positioned, align the mounting clip on the mounting flange directly above the ledger board or rim joist. Insert the screw into the predrilled hole and secure it at a 55-degree angle from the horizontal plane. See **Dia "B"**

CAUTION: When installing the fastener, do NOT overtighten. If using a #7 thin trim screw, tighten to a maximum of 25 in/lbs, if using a #8 thin trim screw, tighten to a maximum of 30 in/lbs. Overtightening could draw the head of the screw through the clamp and fracture the composite.

NOTE: For boards longer than 20 feet, it is recommended to install clips on two joists from each end of the board.

NOTE: It's crucial to install the Mounting Clip simultaneously with the board during installation. Failure to install a mounting clip means that any subsequent boards added will require removal to accommodate the missed clip. Once the deck is completed, it becomes impossible to install the mounting clips.

4. Repeat Step 3 for the remaining boards to complete the installation. See Dia. "C"



Dia. C